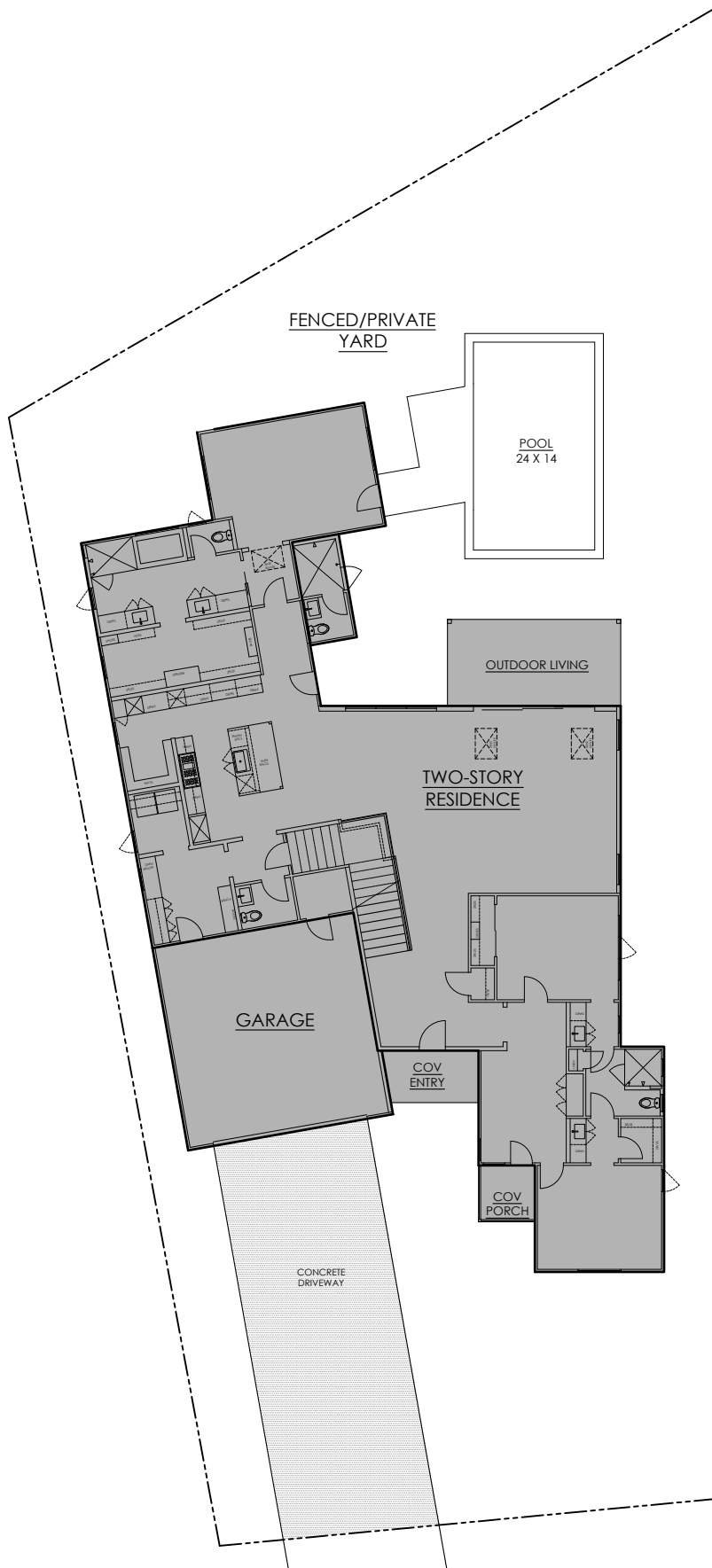
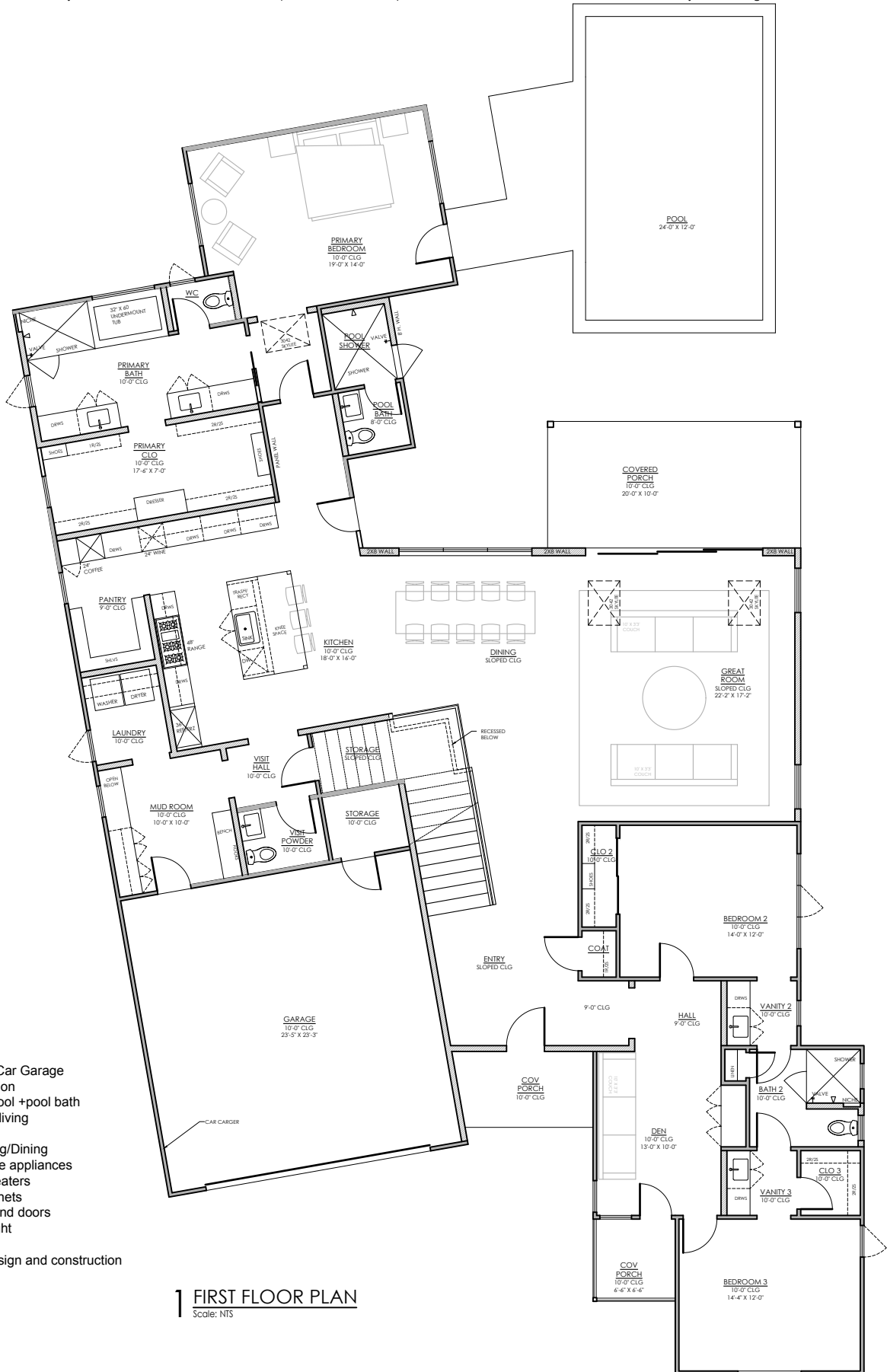


Due to product availability, plan modifications, and market conditions, these specifications are subject to change at any time without notice. All items are subject to individual availabilities and equal substitutions may be made at the sole discretion of Moore-Tate Projects + Design, LLC.



Due to product availability, plan modifications, and market conditions, these specifications are subject to change at any time without notice. All items are subject to individual availabilities and equal substitutions may be made at the sole discretion of Moore-Tate Projects + Design, LLC.



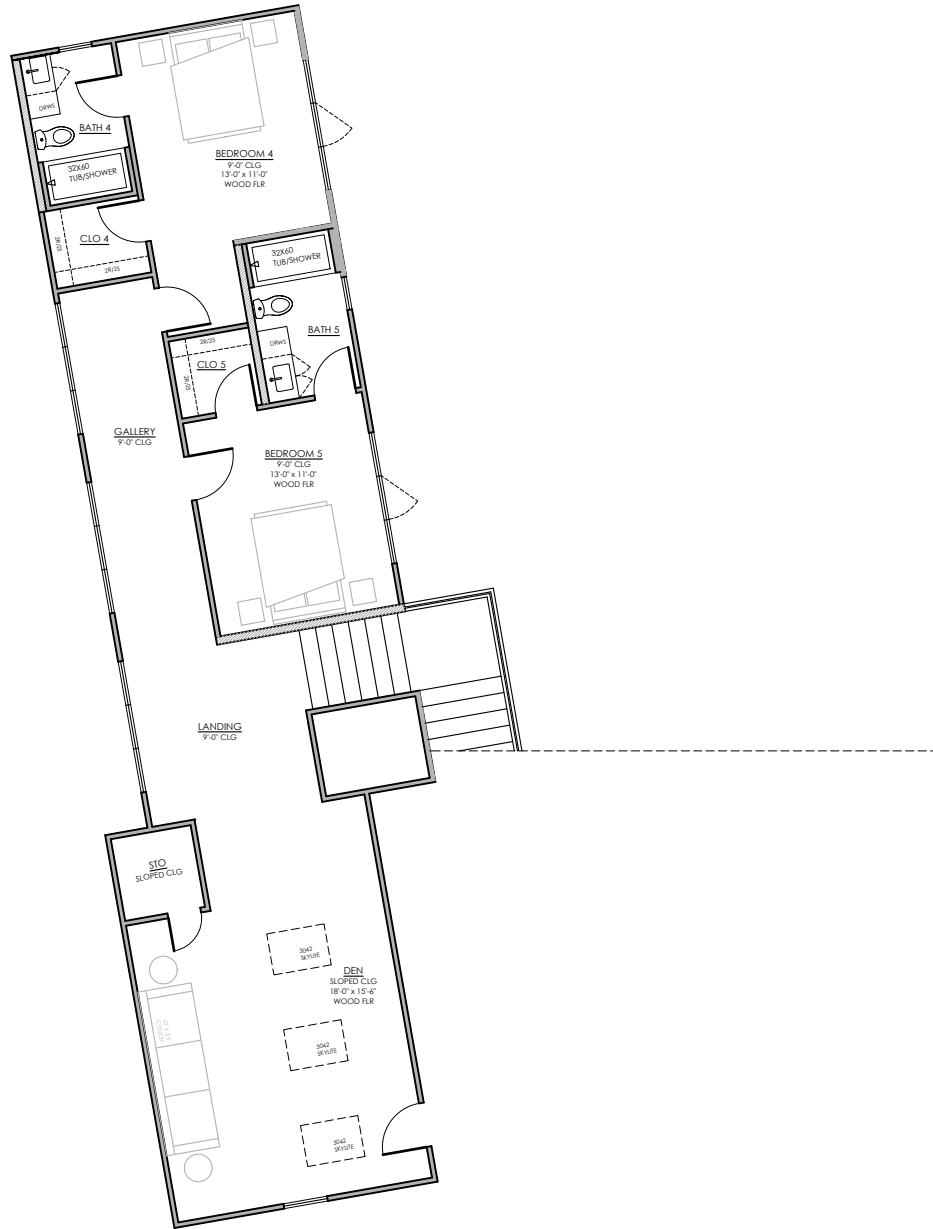
1133 GILLESPIE
 4180 SqFt
 5 bed/ 5.5 bath/ 2 Car Garage
 Prime central location
 Private yard with pool +pool bath
 Generous outdoor living
 10' & 11' ceilings
 Open Kitchen/Living/Dining
 Wolf Range & Miele appliances
 Tankless Water Heaters
 Custom wood cabinets
 Custom windows and doors
 Plenty of natural light
 Vaulted ceilings
 Energy efficient design and construction
 Foam insulation

1 FIRST FLOOR PLAN
 Scale: NTS

1133 GILLESPIE

Austin, TX
 78704

Due to product availability, plan modifications, and market conditions, these specifications are subject to change at any time without notice. All items are subject to individual availabilities and equal substitutions may be made at the sole discretion of Moore-Tate Projects + Design, LLC.



1 SECOND FLOOR PLAN
Scale: NTS